

**SMART VENT**

**877- 441- 8368**

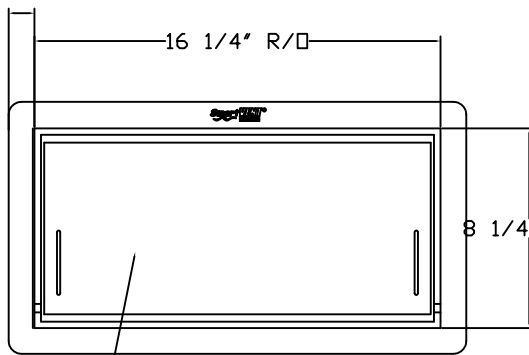
**www.smartvent.com**

# DETAIL DIAGRAM

## MODEL 1540-531-12 and 1540-531-15 (wall thickness)

### INTERIOR TRIM FLANGE & INNER SLEEVE KIT

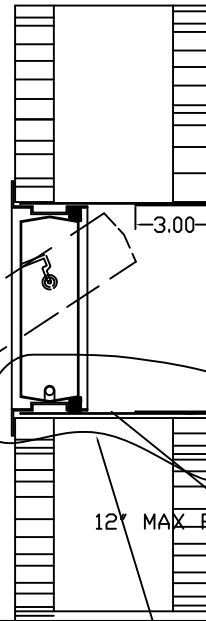
1" FLANGE ALL AROUND



EXTERIOR VIEW

AUTOMATIC FLOOD VENT SHOWN FROM EXTERIOR.  
FOUNDATION FLOOD VENT AS MANUFACTURED  
BY SMART VENT, Inc.

VENT SHOWN OPEN



TRIM FLANGE FINISHES THE INSIDE

1" FLANGE ALL AROUND

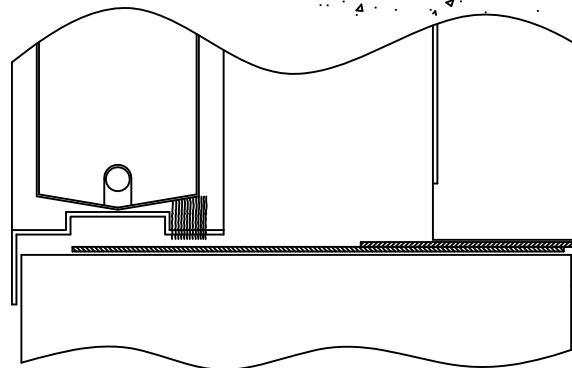


INTERIOR VIEW

12\"/>

STAINLESS STEEL SLEEVE  
AS MANUFACTURED  
BY "SMART VENT" MODEL 1540-531-12 (7" THICK TO 12" THICK WALLS)  
BY "SMART VENT" MODEL 1540-531-15 (12" THICK TO 15" THICK WALLS)

VIEW "AA"



VIEW "AA"

ENLARGED FOR CLARITY

**NOTES:**

- INSTALL OUR INSULATED MODEL OR DUAL FUNCTION MODEL AS PER INSTALLATION INSTRUCTIONS
- INSERT INNER FINISH SLEEVE THROUGH OPENING FROM THE INSIDE
- ENSURE INNER SLEEVE SLIDES OVER THE FLOOD VENT FLANGE
- USE CONSTRUCTION ADHESIVE AROUND SLEEVE FRAME TO SECURE

TOLERANCES UNLESS OTHERWISE SPECIFIED  
X.X +/-0.06  
X.XX +/-0.03  
X.XXX +/-0.005



**SMART VENT®**  
877-441-8368  
WWW.SMARTVENT.COM

SMART VENT Foundation Flood Vents  
450 AndBro Dr., Suite 2B  
Pitman NJ 08071

SMART VENT OR FLOOD VENT  
INTERIOR TRIM FLANGE & INNER SLEEVE KIT  
MODEL 1540-531

THE INFORMATION CONTAINED IN THIS DRAWING IS THE SOLE PROPERTY OF SMART VENT, INC. IF USED IN PROJECT, CHANGES TO DRAWING ARE PROHIBITED WITHOUT THE WRITTEN PERMISSION OF SMART VENT, INC.

SIZE A	DWG NO. 1540-531	REV C
DATE: 5-15-09		SHEET 1 OF 1