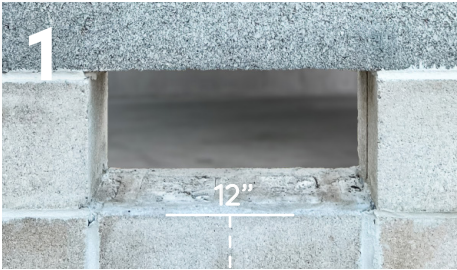


INSTALLATION INSTRUCTIONS

FOR THE INSULATED 1540-520



COLOR OPTIONS



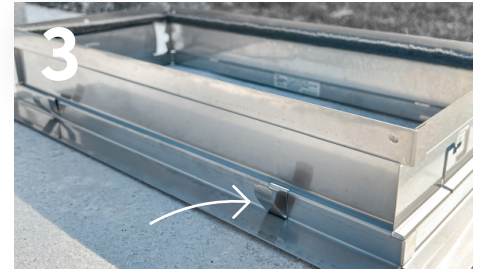
Prepare 16 1/4" W x 8 1/4" H Opening

Ensure the inside and outside are clean. The bottom must not exceed 12" above the highest adjacent grade.



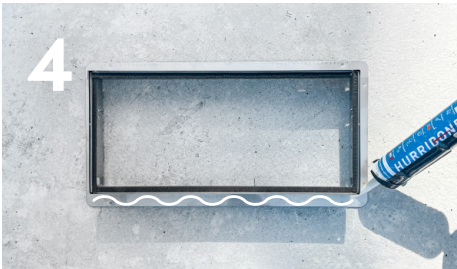
Remove Door From Frame

Turn the vent upside down, rotate the bottom of the door outward and slide out of frame.



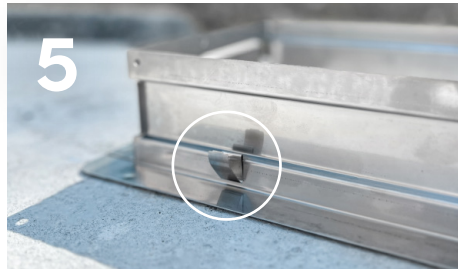
Insert Installation Clips Into Slots

There will be two slots on the top and two slots on the bottom of the frame.



Apply Sealant On Flange

Use Hurribond® or an equivalent adhesive on all edges of the back side of the vent flange.



Compress Bottom Spring Clips

On the outside of the frame, compress the 2 bottom clips to slip the frame into the opening. Afterwards, decompress.



Compress Top Spring Clips

Next, fully push the frame into the opening until it's flush with the wall. Ensure the vent tag sticker is on the bottom, facing up.



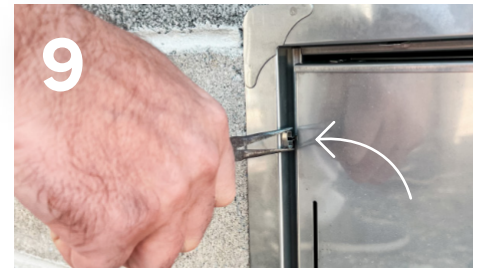
Ensure Vent Placement

Check that the frame is level, flat against the wall. Make sure slots are clear of debris and caulk.



Slide Door Back Into Frame

Grasp the top and bottom with float pins down. Slide door into frame and rotate it until latched.



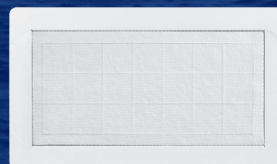
Insert 2 Security Clips

Place a clip in the pivot pin track on left and right side of frame. Needle nose pliers may be needed.



TEST YOUR FLOOD DOOR

Please test and wash your vents at least twice a year. To test, insert a credit card into both float slots.



FINISH YOUR INTERIOR

Our Sealing Kit finishes and seals interior spaces while still letting debris + water flow during a flood.